

OPERATOR'S MANUAL

INCLUDING: OPERATION, INSTALLATION & MAINTENANCE

665006, 665007 and 665008 2" MEASURING CYLINDERS

665006

665007

665008

RELEASED: 3-21-84

REVISED: 3-19-02

(REV. D)



**READ THIS MANUAL CAREFULLY BEFORE INSTALLING,
OPERATING OR SERVICING THIS EQUIPMENT.**

It is the responsibility of the employer to place this information in the hands of the operator. Keep for future reference.

DO NOT EXCEED MAXIMUM WORKING PRESSURE OF 5,000 P.S.I. (344.8 BAR).

INSTALLATION

The unit may be mounted in any position or placed using screw holes provided in feet of (3) brackets. After mounting in required location, remove the plastic plugs from the threaded holes in each end of the cylinder and connect each end of the cylinder to a suitable 4-way air valve system by means of piping or high-pressure hoses. Piping (not furnished) should be extra strong type with 3,000 lb. fittings for pressures to 3,000 p.s.i. (206.9 bar) material pressure or 6,000 lb. fittings for 3,000 - 5,000 p.s.i. (344.8 bar) material pressure.

Delivered quantity is regulated by turning adjusting screws in or out as required. 3-1/2 turns of an adjusting screw equals 1/4 oz. (7.4 ml) of oil or grease.

The brackets are assembled, as shown, at the factory before testing the assembly, but may be moved to any one of the three other positions on the end plates. If moved, be sure the (4) tie rods are drawn up equally and tight enough to hold the pressure in the cylinder. NOTE: Torque (5) nuts to 48 - 50 ft lbs. (65.1 - 67.8 Nm).

MODEL 665006

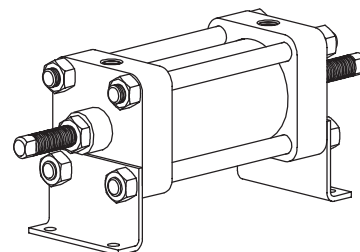
Each adjusting screw can be adjusted individually for 0 - 2 oz. (0 - 59.1 ml) delivery. That is with one adjusting screw turned all the way in, the opposite adjusting screw can be set for 0 - 2 oz. (0 - 59.1 ml) or both adjusting screws can be set to divide the delivery equally on both sides of the piston from 0 - 4 oz. (0 - 118.3 ml) maximum.

MODEL 665007

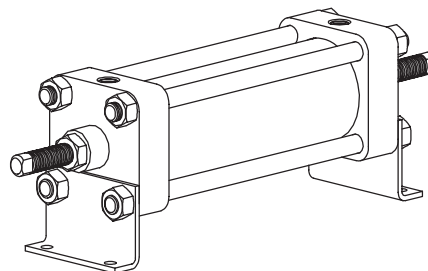
Each adjusting screw can be adjusted individually for 4 - 6 oz. (118.3 - 177.4 ml) delivery. That is with one adjusting screw turned all the way in, the opposite adjusting screw can be set for 4 - 6 oz. (118.3 - 177.4 ml) or both adjusting screws can be set to divide the delivery equally on both sides of the piston from 4 - 8 oz. (118.3 - 236.6 ml) maximum.

MODEL 665008

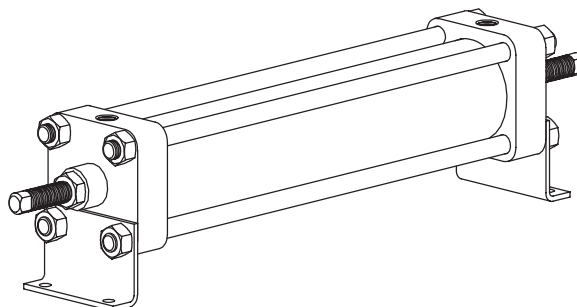
Each adjusting screw can be adjusted individually for 12 - 14 oz. (354.8 - 414.0 ml) delivery. That is with one adjusting screw turned all the way in, the opposite adjusting screw can be set for 12 - 14 oz. (354.8 - 414.0 ml) or both adjusting screws can be set to divide the delivery equally on both sides of the piston from 12 - 16 oz. (354.8 - 473.1 ml) maximum.



Model 665006
(0 - 4 oz. / 0 - 118.3 ml capacity)



Model 665007
(4 - 8 oz. / 118.3 - 236.6 ml capacity)



Model 665008
(12 - 16 oz. / 354.8 - 473.1 ml capacity)

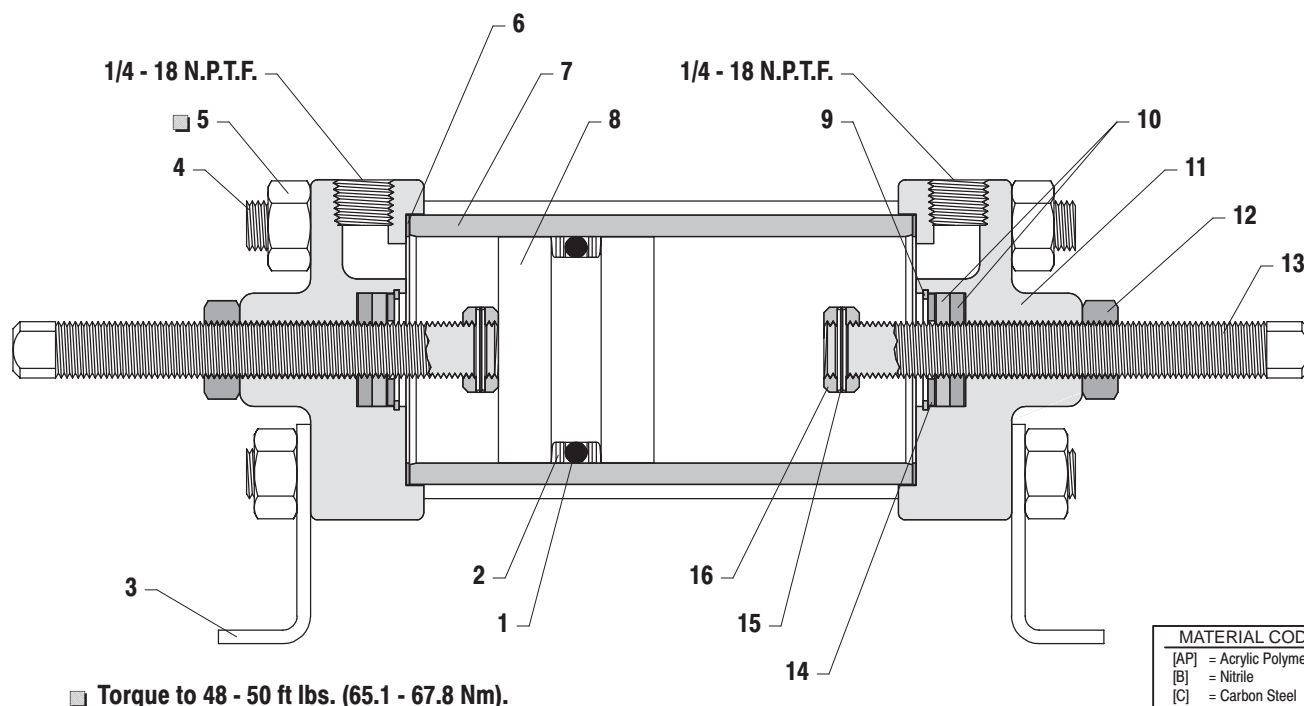
SERVICE HINTS

If the unit fails to deliver, check connections to the 4-way air valve for proper hook-up, and that the material is being delivered to the measuring valve.

66500X PARTS LIST

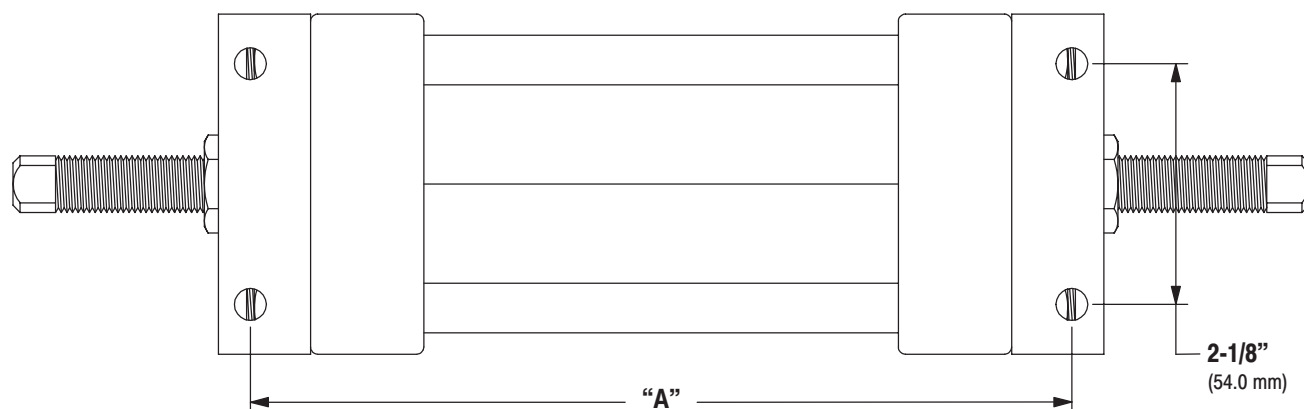
ITEM	DESCRIPTION (Size in inches)	Qty	Part No.	[Mtl]
1	"O" Ring (3/16" x 2" o.d.)	(1)	Y325-326	[B]
2	Back-Up Ring	(2)	73481	[T]
3	Mounting Bracket	(2)	73469	[C]
4	Tie Rod (models 665006 - 7-5/16")	(4)	73479	[C]
	(models 665007 - 9-13/16")	(4)	73480	[C]
	(models 665008 - 14-13/16")	(4)	73474	[C]
5	Nut (7/16" - 20)	(8)	Y11-7-C	[C]
6	Gasket	(2)	73470	[AP]
7	Cylinder (models 665006 - 4-7/16")	(1)	73477	[C]
	(models 665007 - 6-15/16")	(1)	73478	[C]
	(models 665008 - 11-15/16")	(1)	73475	[C]

ITEM	DESCRIPTION (Size in inches)	Qty	Part No.	[Mtl]
8	Piston	(1)	73476	[C]
	End Plate Assembly (includes items 9 - 16)	(2)	60301	
9	Retaining Ring (1.111" o.d.)	(1)	Y147-100	[C]
10	Adjusting Screw Packing	(2)	73468	[N]
11	End Plate	(1)	73465	[C]
12	Nut (1/2" - 20)	(1)	Y11-108-C	[C]
13	Adjusting Screw	(1)	73472	[C]
14	Packing Washer	(1)	73473	[C]
15	Roll Pin (5/64" o.d. x 3/4" long)	(1)	Y178-9	[C]
16	Adjusting Screw Stop	(1)	73471	[C]



MATERIAL CODE	
[AP]	= Acrylic Polymer
[B]	= Nitrile
[C]	= Carbon Steel
[N]	= Neoprene
[T]	= Teflon

MOUNTING DIMENSIONS



Model	"A"
665006	7-1/4" (184.2 mm)
665007	9-3/4" (247.7 mm)
665008	14-3/4" (374.7 mm)